

Welcome...



Vice Rector for International Affairs, Prof. Dr. Birgit Ulrike Münch

...to Bonn



Vice Rector for International Affairs, Prof. Dr. Birgit Ulrike Münch

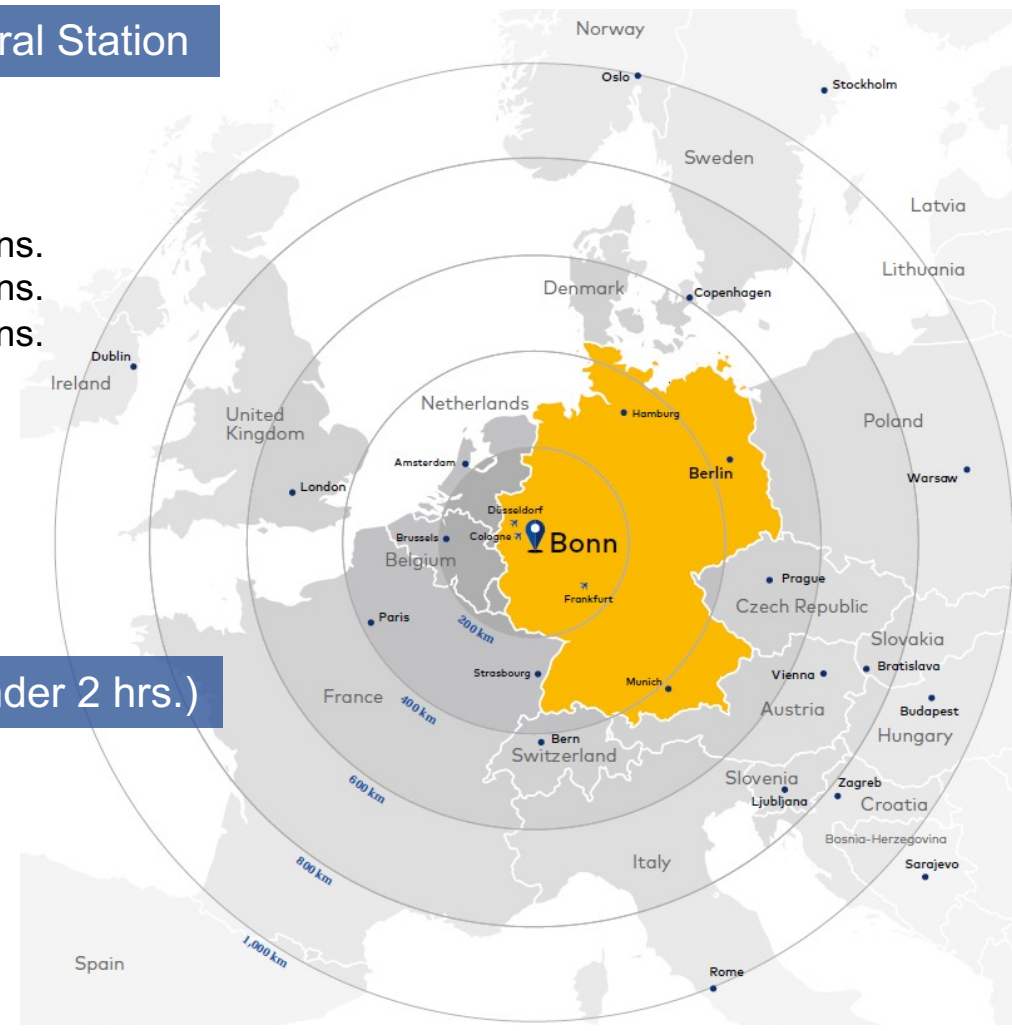


Train services from Bonn Central Station

- **Cologne** 20 mins.
- **Düsseldorf** 45 mins.
- **Frankfurt Airport** 60 mins.
- **Brussels** 2 hrs. 30 mins.
- **Amsterdam** 3 hrs. 30 mins.
- **Strasbourg** 3 hrs. 40 mins.
- **Basel** 4 hrs.
- **Paris** 4 hrs.
- **Hamburg** 4 hrs.
- **Munich** 4 hrs.
- **Berlin** 5 hrs.
- **London** 6 hrs.

Flights from Cologne/Bonn (under 2 hrs.)

- **Berlin** 45 mins.
- **London** 60 mins.
- **Zurich** 60 mins.
- **Copenhagen** 80 mins.
- **Vienna** 90 mins.
- **Milan** 90 mins.
- **Warsaw** 100 mins.
- **Rome** 120 mins.
- **Dublin** 120 mins.



A center of German federal policy

- 6 federal ministries (main headquarters)
- 50 federal authorities and institutions



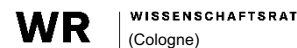
An economic powerhouse

- City with the third-highest market capitalization in Germany
- 16,000 SMEs

International infrastructure

- Large international community (176 countries)
- 15 diplomatic missions
- 5 international schools (all levels)
- 3 international daycare centers

Home to numerous research (funding) organizations



A global center

- City of the United Nations
- Global sustainability hub



- Focused on sustainability
- United Nations University (Vice Rectorate in Europe)



- Headquarters



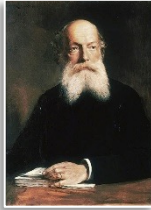


Argelander

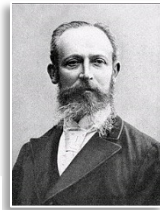


Clausius

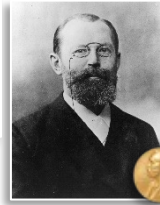
$$\eta_c = 1 - \frac{T_{\text{kalt}}}{T_{\text{heiss}}}$$



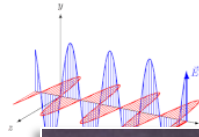
Kekulé



Wallach



Fischer



Hertz



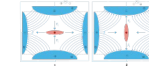
Helmholtz



Peyerimhoff



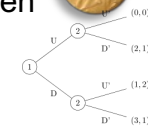
zur Hausen



Paul



Selten



Faltings



Scholze



Founded October 18, 1818 by King Friedrich Wilhelm III of Prussia



Schlegel



Heine



von Linden



Goldberg



Adenauer Schuman



Ratzinger
Pope Benedict XVI



Habermas



Schimmel



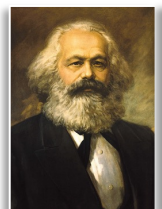
Federal Constitutional Court



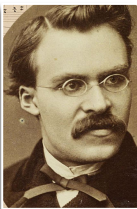
Di Fabio



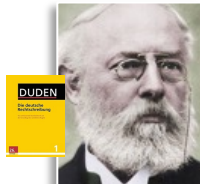
Schnabel



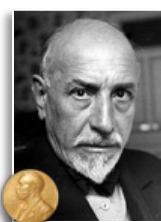
Marx



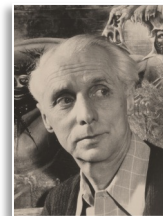
Nietzsche



Duden



Pirandello



Ernst



Curtius



Schumpeter



Barth

Students

33,200 (4,500 international/
140 different countries)

Doctoral students

6,458 (25% international)

Doctorates completed per year

4,300

Postdocs

820 (34% international)

Professors

665 (29.2% women)

Technical/administrative staff

8,000



Facts and Figures

THE Ranking 2024

- Worldwide **91**
- Europe **30**
- Germany **6**



Shanghai Ranking 2024

- Worldwide **67**
- EU **10**
- Germany **4**



7 faculties

- Catholic Theology
- Protestant Theology
- Arts
- Law and Economics
- Agriculture (*the only one in NRW!*)
- Mathematics and Natural Sciences
- Medicine

Degree programs

237
(25% of MA-programs taught in English)

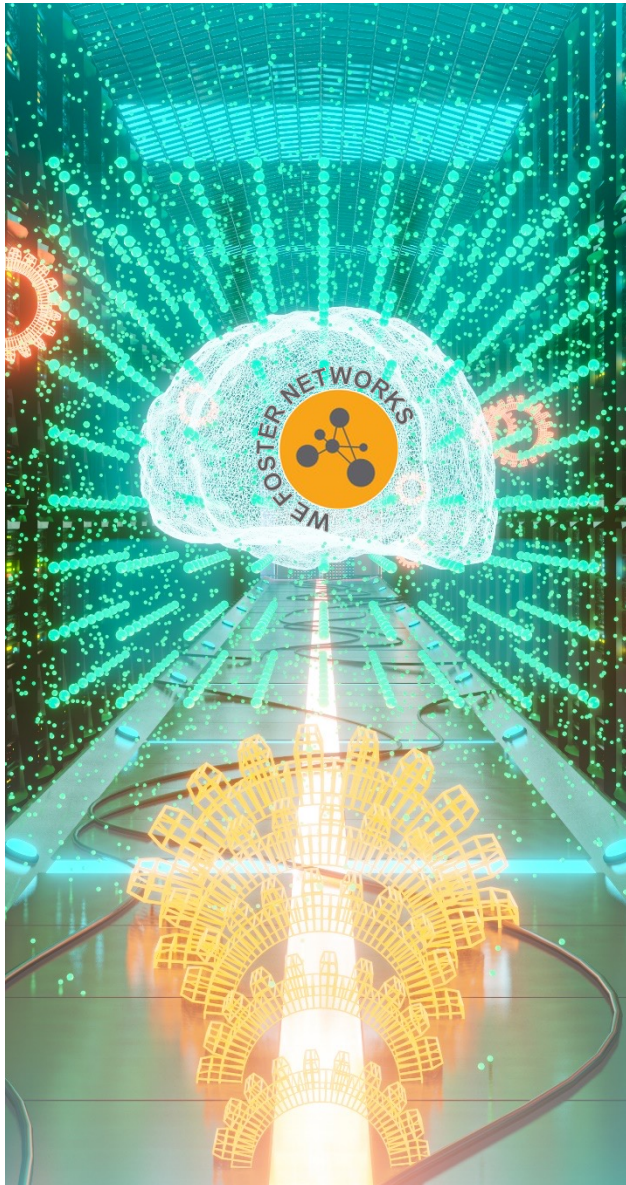
International Graduate Schools

12

Budget

- €773.5 million
- €194.5 million in third-party funding

Clusters of Excellence



Transdisciplinary Research Areas

- Are shaping and burnishing the University's profile
- Are spaces for innovation and exploration beyond **faculty** and discipline boundaries
- Are tackling academic, scientific, technological and societal challenges
- Have a dedicated budget and professorships

TRA
MODELLING

Mathematics, Modelling and Simulation of Complex Systems



TRA
MATTER

Blocks of Matter and Fundamental Interactions



TRA
LIFE AND HEALTH

Life and Health



TRA
INDIVIDUALS AND SOCIETIES

Individuals, Institutions and Societies



TRA
PRESENT PASTS

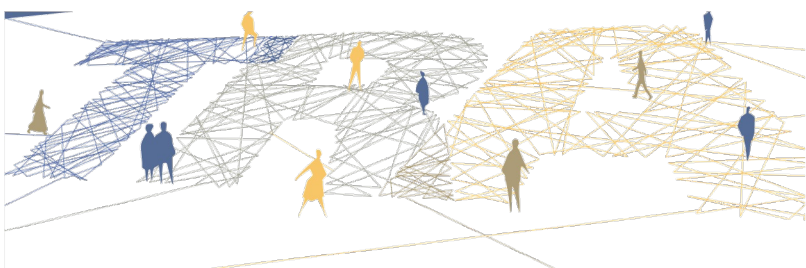
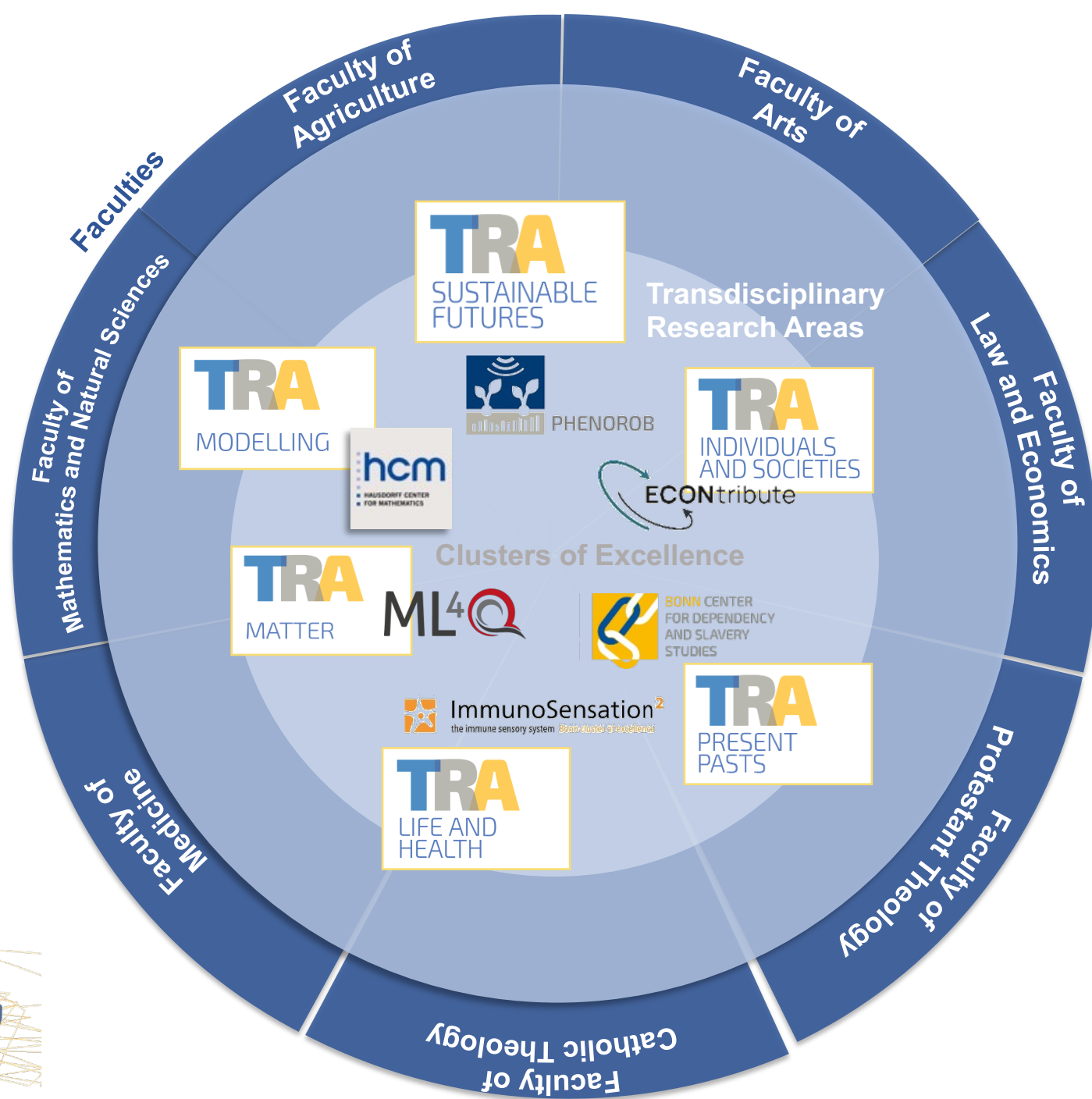
Past Worlds and Modern Questions. Cultures across Time and Space



TRA
SUSTAINABLE FUTURES

Innovation and Technology for Sustainable Futures







Your Postdoc at the University of Bonn

As a postdoc at the University of Bonn, you have every opportunity to achieve academic independence, pursue your career path and reach for the stars. The [Argelander Competence Center](#) offers you a comprehensive range of qualifications, funding opportunities and further support to make the best possible use of your time at the University of Bonn. Find out about the offers that are available to you in the Argelander program for early-career researchers.



© fauxels von pexel

Orientation

Regardless of whether it is at the beginning or at the end of the postdoc phase, the University of Bonn offers researchers from postdoc level a wide range of advisory and coaching services for personal assessment, career planning and career development.

[Advisory Offers](#)

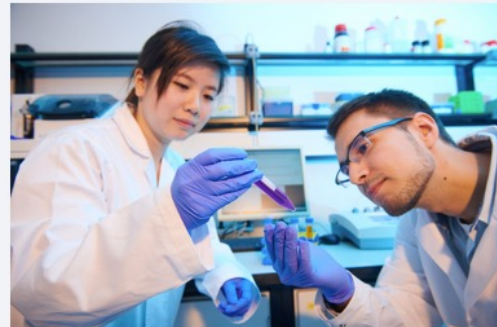


© Unsplash

Qualification

As a postdoc at the University of Bonn, we accompany you on all career paths: in research, in research management or in business and society. Training, mentoring and coaching programs offer you a wide range of opportunities to develop your interdisciplinary skills.

[Qualification Program](#)



© Lannert / Uni Bonn

Support

The University of Bonn supports postdocs in various funding lines and provides individual advice on external funding opportunities. Whether it is material for carrying out your own research projects or travel grants as part of a conference participation.

[Support Offers](#)

Contact:



Clara Kaminsky

kaminsky@verwaltung.uni-bonn.de

+49 228 73-60140

Managing Director of the Bonn Graduate Center

© Barbara Frommann/Uni Bonn



Eileen Bradley

bgz@verwaltung.uni-bonn.de

+49 228 73-60141

Office Manager of the Bonn Graduate Center

© Barbara Frommann/Uni Bonn

Click [here](#) for additional information.



UNIVERSITÄT **BONN**

Thank you!