

“The KERC has been laying down a foundation for Korea-EU research cooperation since its establishment. Especially for last two years, the KERC has grown into an essential part of Korea-EU R&I policy cooperation by strengthening its information aspect, expanding its network and creating new opportunities for collaboration. In upcoming years, we aim to build a true information and networking platform for Korea-EU research cooperation.”

Director General
CHO Woohyun Ph.D

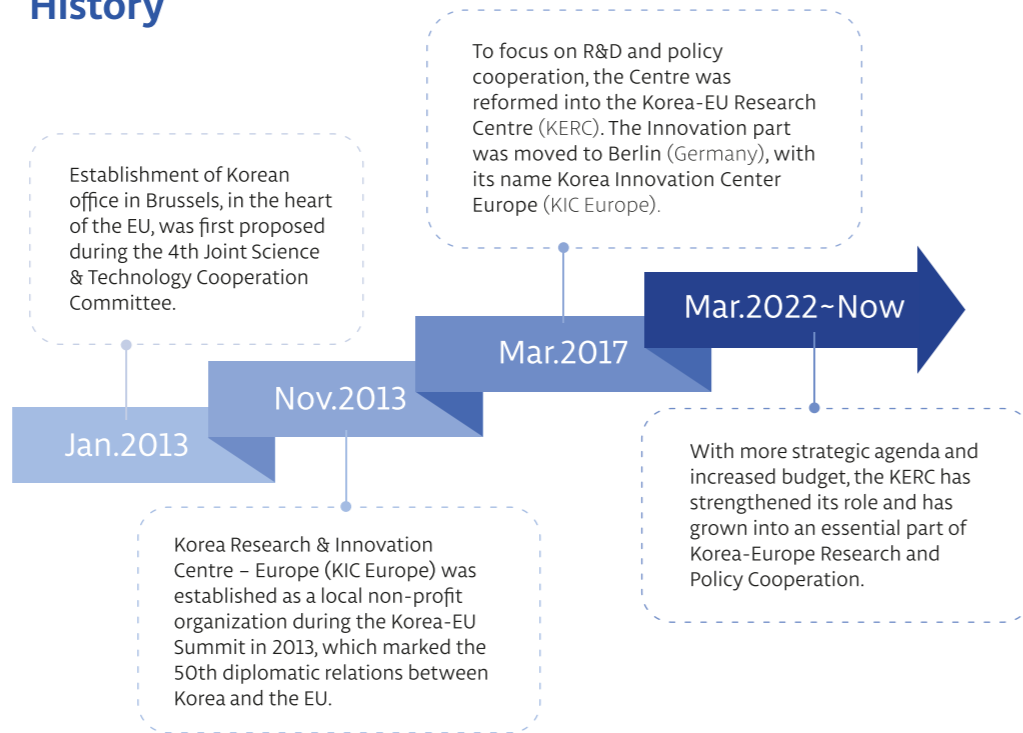


ABOUT KERC

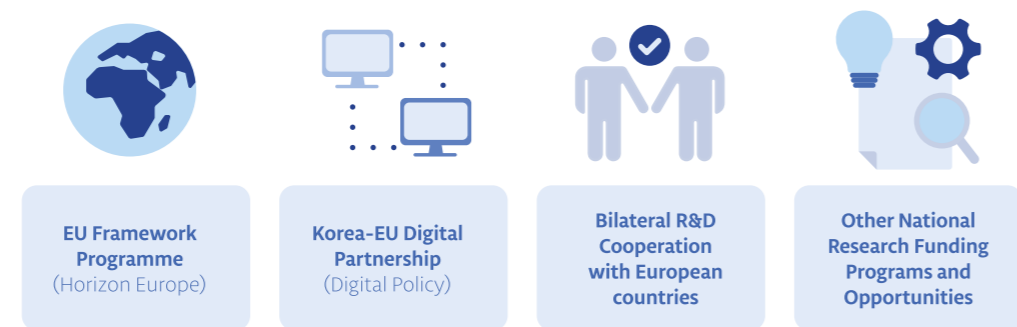
“A Bridgehead to enhance Korea-EU R&D Cooperation”

Korea-EU Research Centre (KERC) was established in 2013 to promote the R&I cooperation between Korea and the EU. The KERC serves as a platform to facilitate R&I policy and research collaboration.

History



Main policy area



PROJECT OVERVIEW

Main Roles

Korean Liaison Office to the EU

To facilitate cooperation between Korea and the EU on a national, governmental and institutional level, the KERC serves as a policy cooperation platform between Korea and Europe. The KERC functions as one of overseas offices of the National Research Foundation of Korea (NRF), and we have hosted following national institutes by so far:



Seconded staffs hosted by the KERC are designated as NCPs in their respective fields of expertise.

National Contact Point (NCP) Coordinator

The KERC coordinates Korean NCPs for Horizon Europe to promote Korean participation in EU R&I framework programme. We organize info session and education & training workshops for NCPs, and provide extensive information on Horizon Europe.

Korea-EU Research Cooperation Platform

The KERC connects Korea and Europe to revitalize research cooperation and to create joint R&D project.

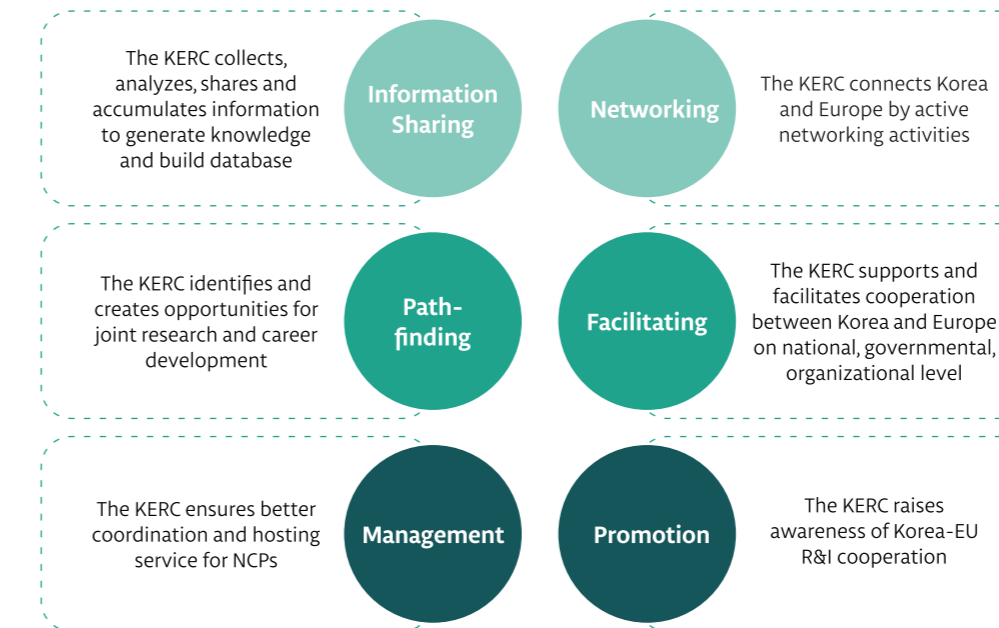


Korean Observatory on European R&I

To identify potential cooperation area, and to increase awareness and understanding on European R&I landscape, we keep track of EU's policy and research trends.

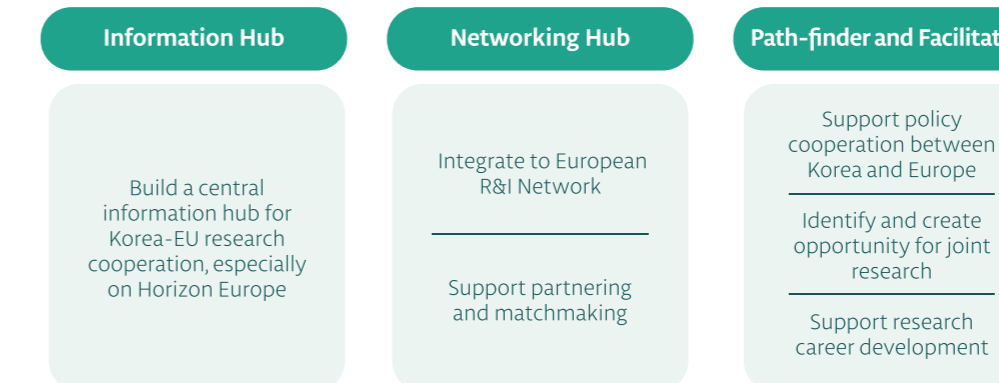
OUR ACTIVITIES

Our Activities



Work Programme 2023-2026

The main objective of the KERC for next 3 years is to become a central Information & Networking hub for the Korea-EU research cooperation and to strengthen its role as path-finder and facilitator.



Details of Activities

Information

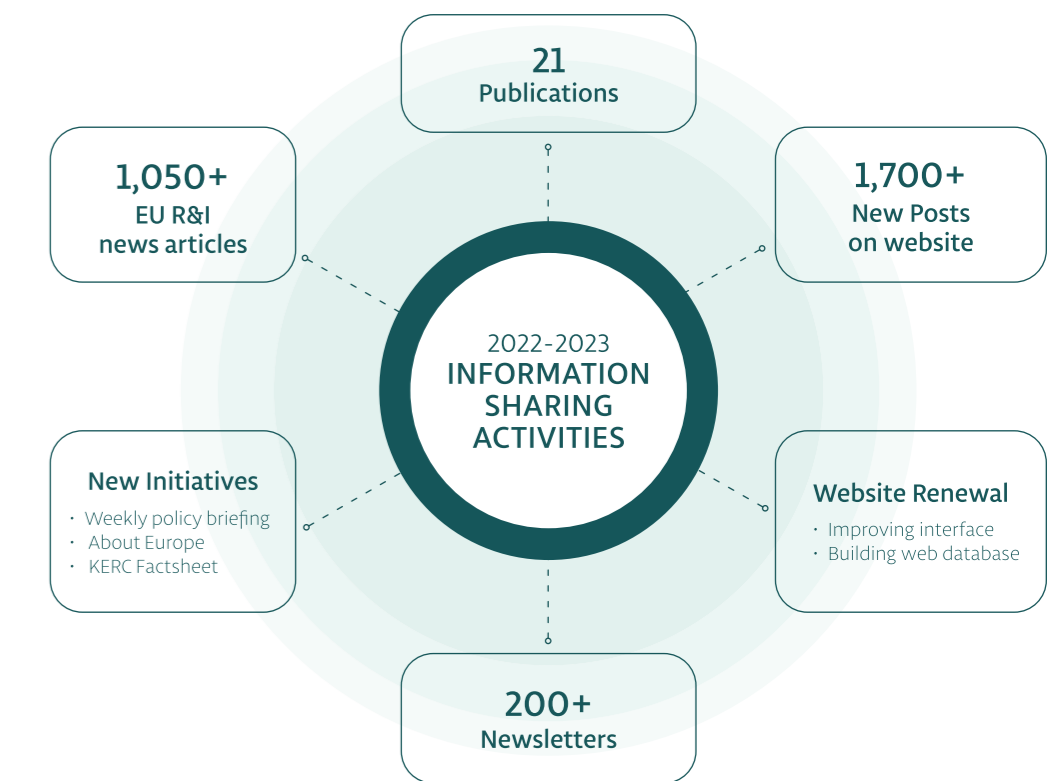
In 2022, we strengthened our information services exponentially by maximizing the amount of information that we provide while keeping its quality in order to cover all R&I related issue.

To maximize visibility and use of these information, we increased newsletter services, we published various reports and launched new initiatives.

Through these activities, we currently serve as a forefront source of information to Korea on research and innovation policy and research activities in Europe.

The KERC will continue its effort to provide high-quality information service, and will enhance knowledge generating aspect with more expertise in priority areas such as digital policy and Horizon Europe.

Also, we will increase information on Korea's R&I policy and landscape for European partners.

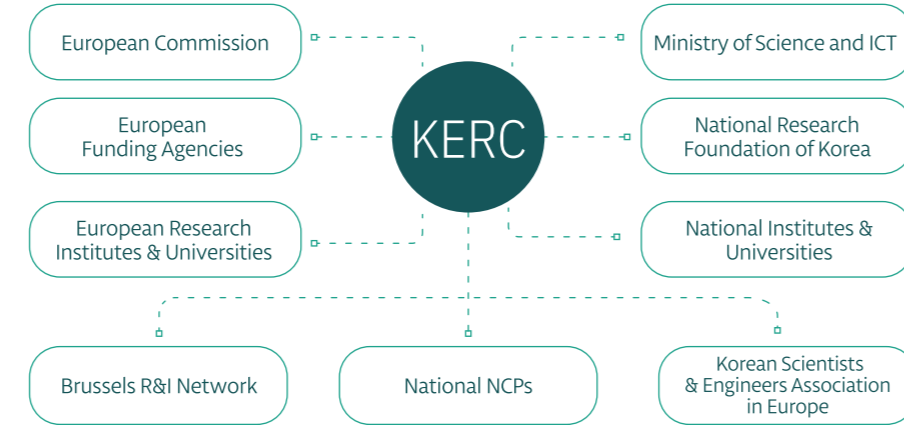


Networking

The KERC actively participates in major European R&I events, seminars, forums and other activities online and offline.

Over past two years, we have established many new connections with R&I actors in Europe and Korea.

Through numerous meetings and discussions with our old and new partners, we successfully launched joint activities that contributed to Korea-EU research cooperation.



Our aim is to be integrated into European R&I community. To this end, we will actively engage with existing European R&I associations and networks.

The ultimate goal of the KERC is to create a Korea-Europe R&I Networking Platform where researchers and organizations can share information, find partners and launch a joint activity such as a match-making event, info-session, workshop and everything.

Facilitating

The KERC keeps the government up to date with latest information on European STI policy and landscape, and advises them on major policy cooperation areas with Europe.

For last two years, we mainly focused on the negotiation between Korea and the EU on Horizon Europe association and ROK-EU Digital Partnership

As a local base in Europe, the KERC supports, engages, facilitates and coordinates policy cooperation discussions between national governments or research organizations.



Path-finding

In 2022 and 2023, we have initiated several new activities that can help young Korean researchers to develop their research career in Europe.

It includes MSCA PF online workshop, the very first event that officially introduced MSCA Postdoctoral Fellowship programme to Korean researchers, and the KERC Youth Forum, the first-in-kind event that provided a platform for mentorship, networking and information sharing to Korean young scientists in Europe.



We provide tailored info-session to Korean research organizations that seek collaboration opportunity with Europe. During 2022 and 2023, we organized more than 20 info-sessions online and in person

Also, we consult Korean organizations that visit Europe for international cooperation in research and policy. Every month, 2-3 organizations from Korea visit the KERC.

As a helpdesk for Korea-EU Collaboration, we respond to the questions about European research programmes and to the requests on finding partners in Europe. There were in average 100 inquiries a year in 2022 and 2023.

Management & Promoting

The KERC serves as a bridgehead and a pivotal point to support Korean organizations' cooperation with Europe.

It coordinates Korean NCPs, hosts seconded staffs from major national institutes, supports and establishes other overseas offices in Europe, and bring them together to make synergies to Korea-EU cooperation in Science and Technology.

Also, we provide education & training program to Korean R&I staffs in collaboration with our local partners. It aims to enhance their global capacity and to learn from best practices of Europe.

Finally, the KERC promotes Korea-EU research cooperation by raising awareness and understanding of R&I policies and landscapes of both sides.

We produce a variety of multimedia and publications, and actively launching promotional activities through events and social media.



Rue de la science 14a, 1040 Brussels



Korea-EU Research Centre



KERC LinkedIn